

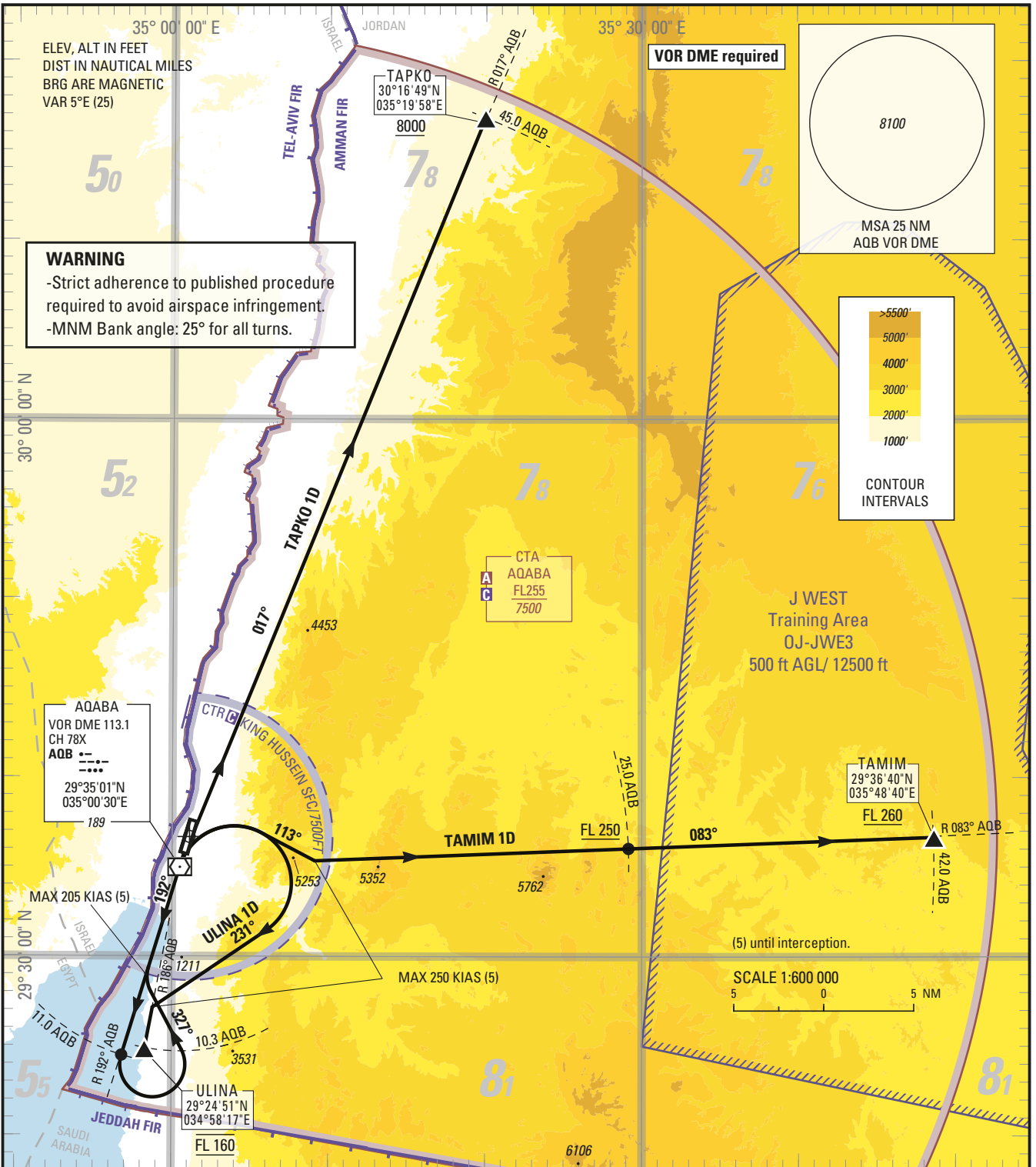
**STANDARD DEPARTURE CHART —
INSTRUMENT (SID) — ICAO**

TRANSITION LEVEL	FL 150
TRANSITION ALTITUDE	13000 ft

Aqaba Sector	132.425
King Hussein Tower	119.2

**AQABA/King Hussein Intl. (OJAQ)
RWY 19**

TAMIM 1D TAPKO 1D ULINA 1D



TAMIM 1D:
Climb (1) (4) on course 192°M to AQB, then follow R 192° AQB (192°M). At 11.0 AQB turn left (2) heading 327°M to intercept and follow R192° AQB (012°M) to AQB. At AQB, turn right (3) heading 113°M to intercept and follow R 083° AQB (083°M), crossing 25.0 AQB at or above FL250 (4), then to TAMIM at or above FL260.
(1) PDG: 4.5% up to 4100. (2) Max 205 KIAS. (3) Max 250 KIAS. (4) ATS climb gradient: 7.3% up to FL250. Advise ATC if unable to ensure the ATS climb gradient.

TAPKO 1D:
Climb (1) (3) on course 192°M to AQB, then follow R 192° AQB (192°M). At 11.0 AQB turn left (2) heading 327°M to intercept and follow R192° AQB (012°M) to AQB then follow R 017° AQB (017°M) to TAPKO at or above 8000.
(1) PDG: 4.5% up to 5100. (2) Max 205 KIAS. (3) ATS climb gradient: 7.0% up to 13000. Advise ATC if unable to ensure the ATS climb gradient.

ULINA 1D:
Climb (1) (4) on course 192°M to AQB, then follow R 192° AQB (192°M). At 11.0 AQB turn left (2) heading 327°M to intercept and follow R 192° AQB (012°M) to AQB. At AQB, turn right (3) heading 231°M to intercept and follow R 186° AQB (186°M) to ULINA at FL160.
(1) PDG: 4.5% up to 5100. (2) Max 205 KIAS. (3) Max 250 KIAS. (4) ATS climb gradient: 7.0% up to 13000. Advise ATC if unable to ensure the ATS climb gradient.

